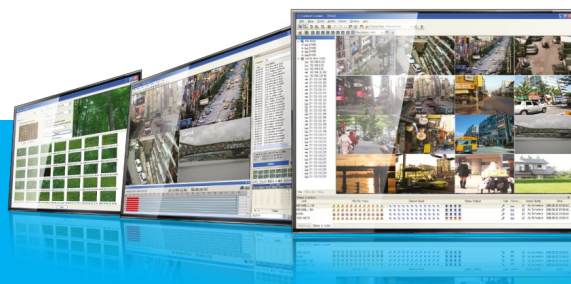




Central Monitoring Software

Control Center



Key Features

- Central Monitoring Software supporting Max. 1024 units
- Consist of Monitoring, Playback, Setup Program and other Utilities
- Max. 144ch multi-screen monitoring
- Max. 2 monitors and 288 channels per PC
- Support 4K monitor and 4K resolution
- Support HW decoding (Live view, Playback)
- Support RTSP streaming
- Grouping Viewset(customized multi-screen) and eMAP layer(GIS map)
- Search by Calendar, Time Line, Event, Text, Smart, Thumbnail and Instant
- Emergency bell popup, People count, License plate search and etc.
- Status&Action panel graphically displays the status of connected units
- Alarm Log panel shows the logs of event and alarm
- Schedule backup performs auto backup for selected period
- Direct connect DVR's HDD to PC for Playback/Search/Backup/Copy
- Authority setup for each user
- Remote DVR(remote DVR control), Service channel feature

Specifications

GENERAL	
Max. Unit	1024
Max. Monitor(View)	2
Supported Division	1 / 4 / 6 / 7 / 8 / 9 / 10 / 13 / 16 / 25 / 36 / 49 / 64 / 81 / 100 / 121 / 144
H/W Support	DVR QAC Series, UHD Series, HS Series, HTC Series, HAC Series, HD Series, LH/EH/MH Series, MD Seires
	NVR & IP UHN Series, NK1080 Series, N1080 Series, NT1080 Series, NT5000 Series, NM1080/NM4000 Series, MPEG-4 WebEye Series
	ETC WinRDS, NVS04S
Video Format	H.264+ / H.264 / MPEG4 / JPG
Onvif Profile-S	NO
Audio Format	ADPCM / Truespeech / G.711
User Management	YES
Account Level	YES
Max account	100
WNS (DDNS)	YES
WRS (Dynamic IP Registrati on Server)	YES
4K Resolution	YES
4K Monitor	YES
HW Decoding	Monitor, Playback
Dewarp (Fisheye Camera)	Monitor, Playback
MONITOR	
Performance	25 HD 1080p 30fps 64 nHD 30fps
Real-Time Audio	YES
Remote PTZ Control	YES
Remote I/O Control	YES
Save snapshot image	YES
Quick Recording	YES
Instant Search	YES
Remote DVR	YES
Service Channel	YES
Emergency bell pop up	YES
Alarm Log Viewer, Save/Search Event List	YES
People Count	YES
Auto Action	YES Alarm Popup, Buzzer
Rule based auto action	NO
Error Management (Latch Function)	NO

Action Log	NO	
Log Save	YES	
Status Viewer	YES	
Health Check	NO	
Auto Connection (Lost & Recovery)	YES	
Watermark	YES	
Keyboard Shortcuts	NO	
Joystick	NO	
View Set (group)	YES	
Map	YES	
PLAYBACK		
Playback	YES	
Backup (exe(re4), avi, mp4)	YES	
Log Viewer	YES	
Timeline display(log)	YES	
Timeline index search		
Go to a certain time	YES	
Calendar search		
Playback event image	YES	
Speed playback (1/16x ~ 64x)	YES	
Smart Search	YES	
Thumbnail Search	YES	
Text Search	YES	
License plate search	YES	
Snapshot / Print	YES	
Zoom in/out image	YES	
Brightness/Contrast		
Audio play	YES	
UTILITY		
Schedule Backup	YES	
DVR HDD Manager	YES	
System Requirement		
Recommended	CPU	CPU Intel(R) Core(TM) i7-6700 CPU @ 3.40GHz
	RAM	RAM 8GB or higher
	GPU	GPU RAM 4GB or higher, Graphic Card Intel(R) HD Graphic 530 or higher
	NETWORK	100/1000 Ethernet NIC
OS		Windows 7(x64), Windows 8(x64), Windows 10(x64)

* Specifications are subject to change without notice for product improvement.